



Integrations

Overview and benefits of the various edays integrations, from calendars to full HRIS systems



Introductions



Harry Warren

Head of Customer Success

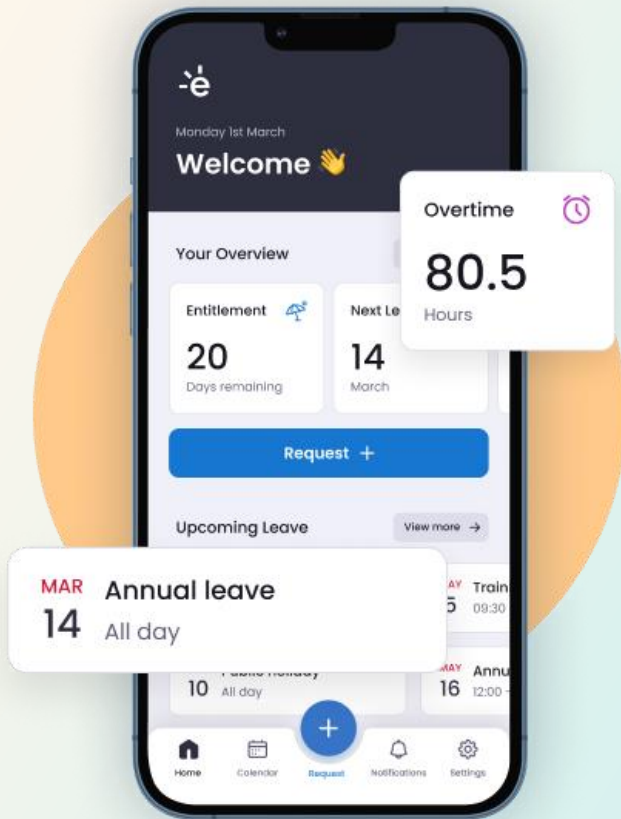


Jenny Jones

Customer Success Manager

Agenda

- edays Outlook & Gmail Integrations
- Wellbeing Integrations
- Single Sign-On (SSO)
- Integrations with HRIS & Payroll Systems
- Q&A
- **What's Up Next?**

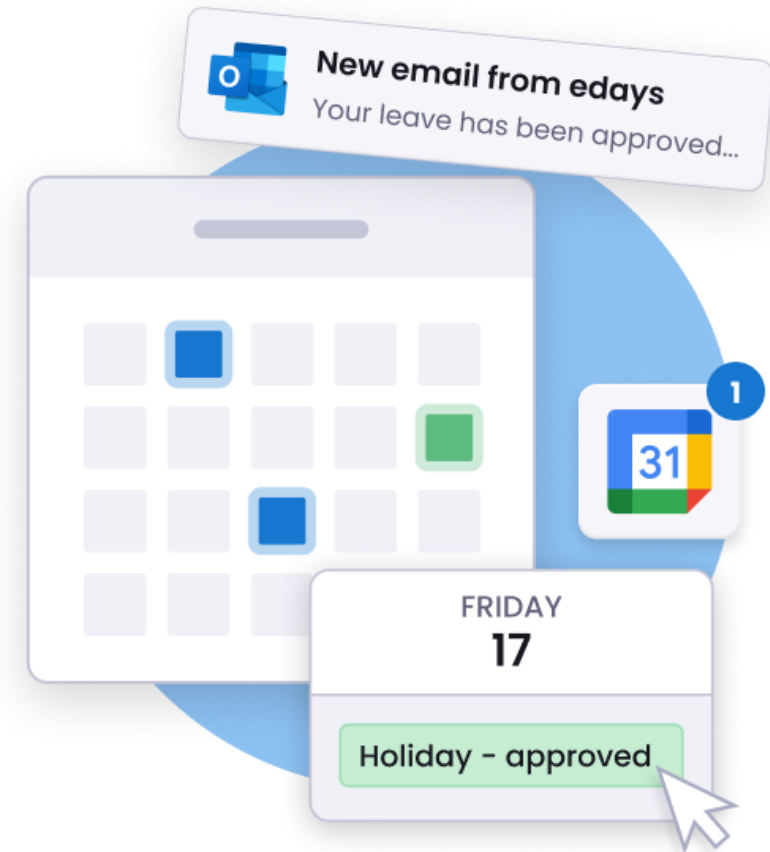


Edays Outlook & Gmail Integrations

edays can be configured to sync with your email providers such as Outlook or Gmail, so absence bookings will appear in your email calendar.

Types of Calendar Integrations

- Calendar Import (manual)
- Outlook & Gmail (automatic)

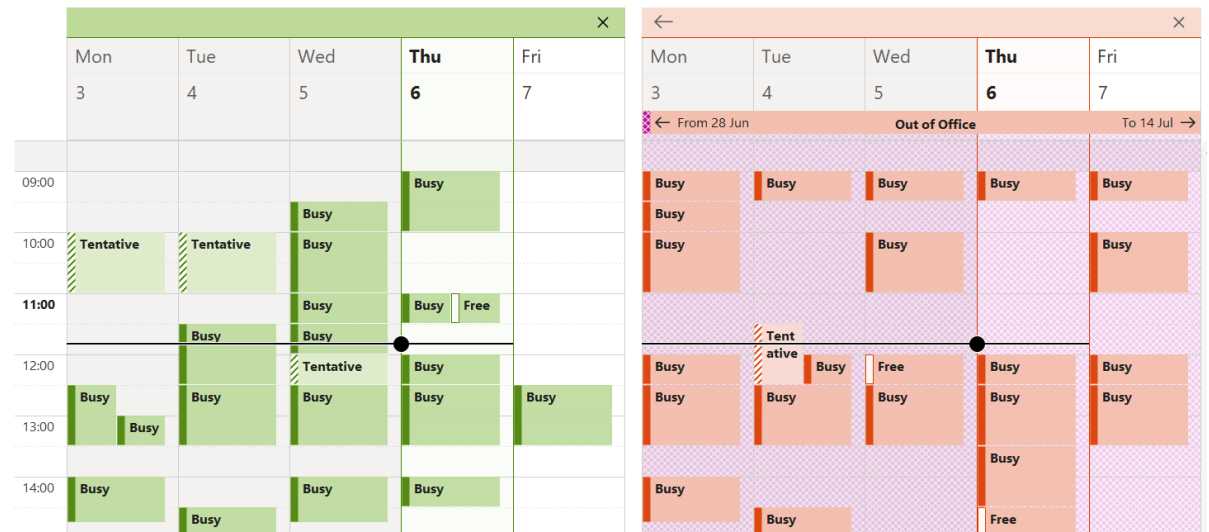
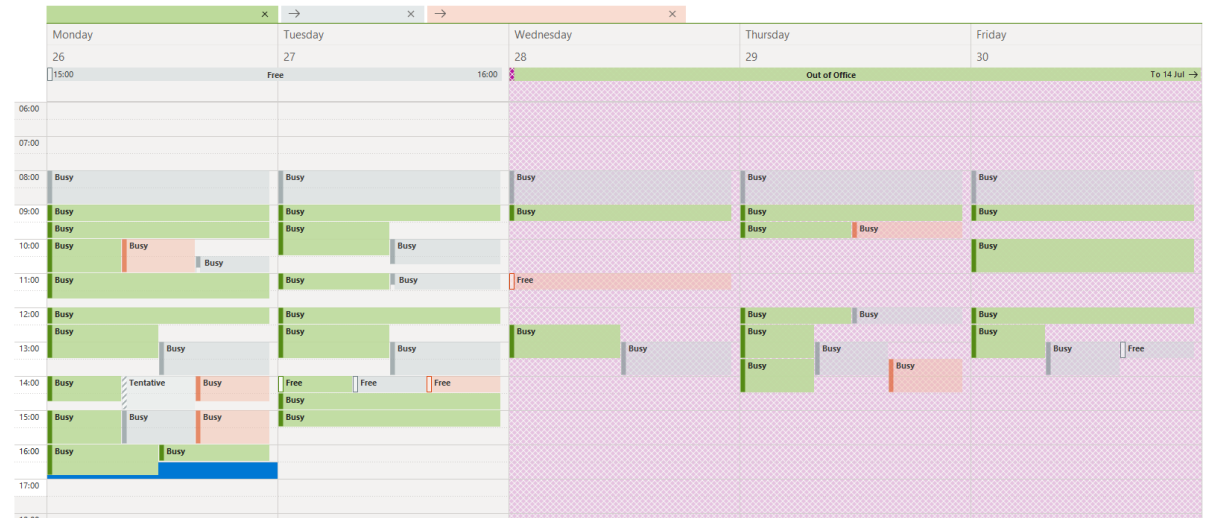


Outlook 365: API Integration

Automatically sync holiday & sickness bookings from edays to your Outlook calendar

Can be shared with users and/or authorisers so they have full visibility of their reportees absences

Settings can be applied to determine whether the name of the absence is visible in Outlook



Single Sign-On (SSO)

Single sign-on (SSO) allows users to log in to multiple platforms using just one set of credentials. Utilising a trusted third party to verify the credentials, SSO strengthens security, simplifies integrations and improves the user experience.

Key Benefits

- Seamless user experience
- Enhanced system security
- Boosted productivity
- Lower costs for IT resources



For more information contact
clientstrategy@e-days.com

Integrations with HRIS & Payroll Systems (API)

Our edays API allows you to integrate with other systems seamlessly to provide your business with a complete solution built around your absence management needs.

Inbound

- Import new starters
- Update & Maintain Users (Authorisers, Groups, Templates, Entitlement)
- Centralised Data

Outbound

- Absence Data for payroll systems

"With the combination of Cornerstone for booking and managing learning alongside the absence tracking and reporting offered through edays, we've found a solution that has saved endless hours of admin and increased employee engagement globally."

4Finance

Documentation Available



For more information contact
clientstrategy@e-days.com

Our Standard Connectors

Cornerstone HR

Cornerstone HR customers can use their connector to synchronise users and OUs (groups) from Cornerstone HR to edays and display basic entitlement information from edays in their Cornerstone on Demand dashboard.

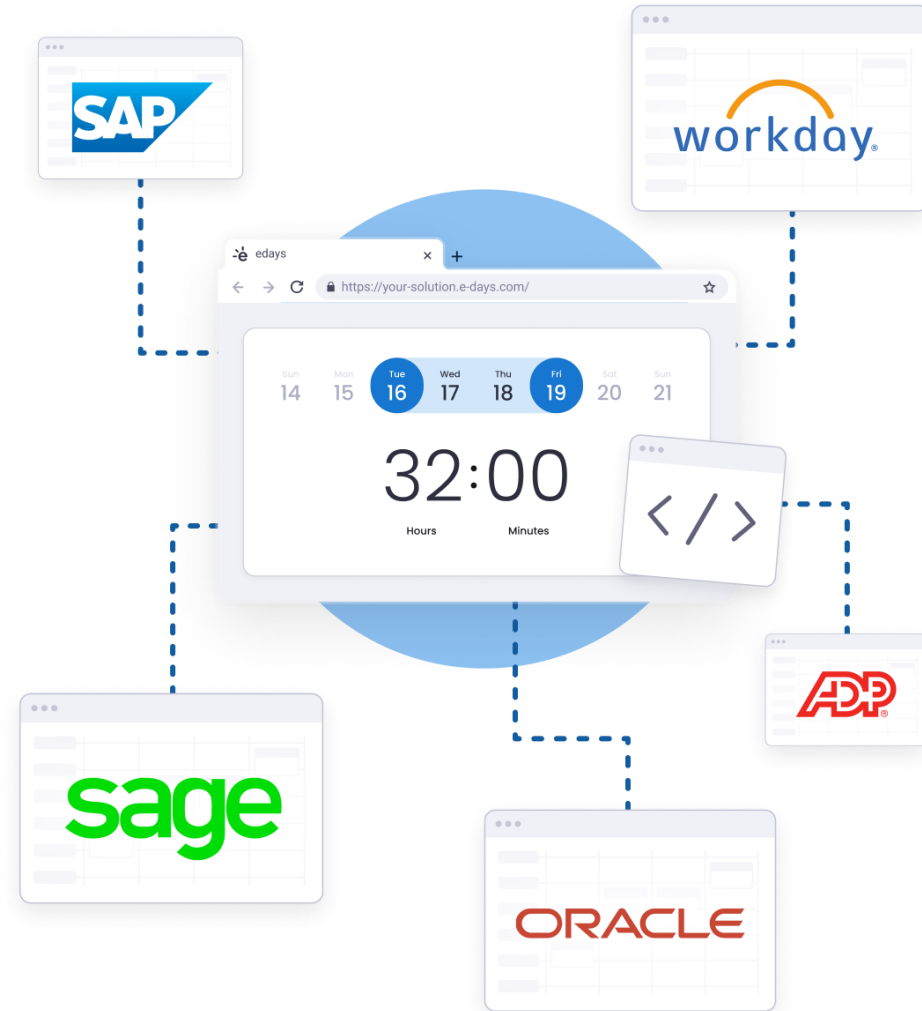
IntelliHR

edays use IntelliHR's API to sync users and OUs (groups) over from IntelliHR to edays.



Other HRIS Platforms

- Workday
- SAP
- Sage
- Oracle
- ADP
- Talentsoft



Coming up next



-edays
education

**Day-to-day Essentials:
Beginner's Guide**
Free Training Webinar

Thurs 10th Aug

Register Now

Agenda

- Entitlements and Public Holidays
- System Hierarchy
- Creating and Assigning a Rota
- Groups and Minimum Staffing

When
Thursday 10th Aug
From
12:00
To
12:45

Thank you



On-Demand

A recording of today's session will be available On-Demand via our Support Portal, and you'll be emailed a link once available too



Need Extra Training?

If you're looking for additional training on this topic or for something else in edays, please reach out to customersuccess@e-days.com



Feedback

We value your feedback and are continuously looking to improve our webinar series – please do get in touch if you have any thoughts!